



Paulmann

Safety Instructions

1, 2, 3, 4, 5, 6, 7, 8, 16, 19,
22, 23, 24, 29, 32, 33, 34



Info

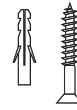
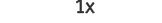
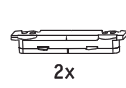
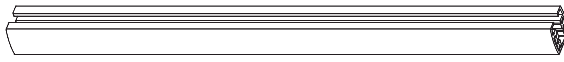
www.paulmann.com

Paulmann Licht GmbH
Quezinger Feld 2
31832 Springe
Germany

www.paulmann.com

Art.-Nr.: 969.43
969.44
969.45

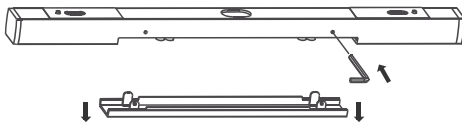
(+MA326)PH10/20



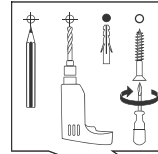
incl.



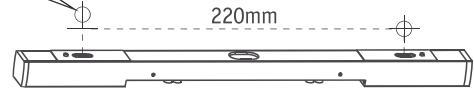
A



B

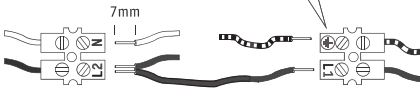


Safety
Instructions
Nr. 1-8,19



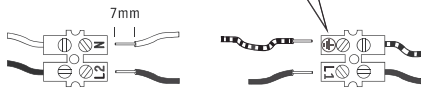
C1 C2

Cable NYM-J
3x max. 1,5 mm²



C1 C2

Cable NYM-J
5x max. 1,5 mm²

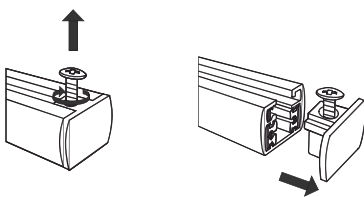


L2 L1

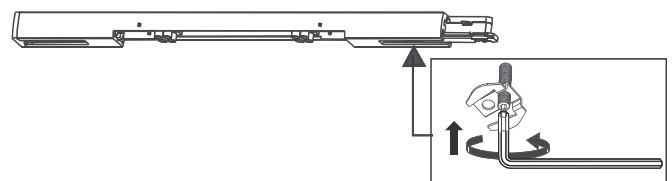


D

1.



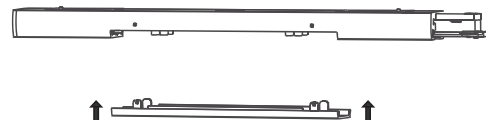
3.



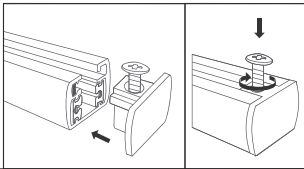
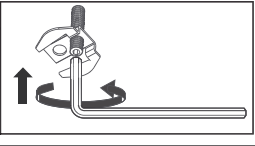
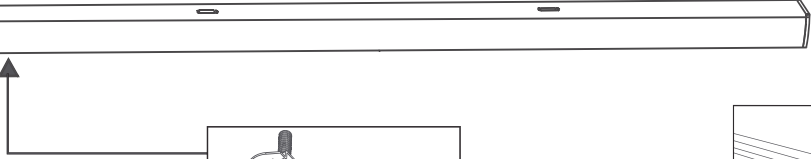
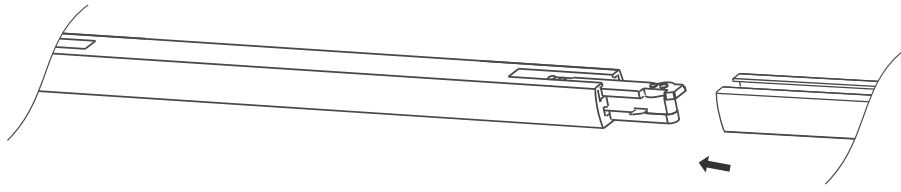
2.



4.



E



 Nr.1-8,19

