

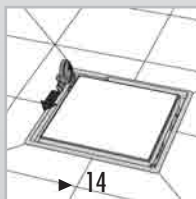
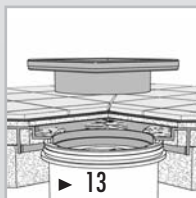
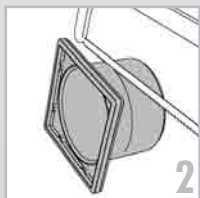
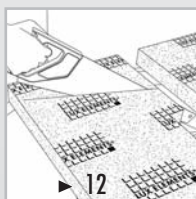
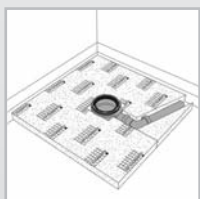
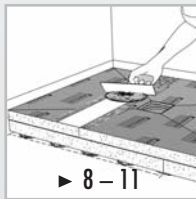
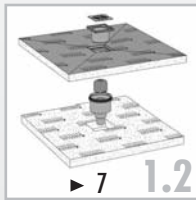
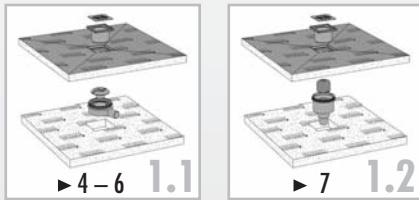
LUX ELEMENTS®-TUB

Montageanleitung
Instructions for assembly
Instruction de montage
Montagehandleiding



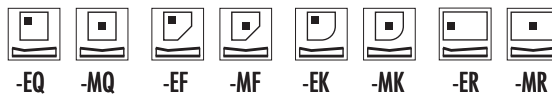
LUX ELEMENTS
GmbH & Co. KG
P-AB/20802/05-2008





Register-Nr. P1B036/05 und P1B037/05

LUX ELEMENTS®-TUB



LUX ELEMENTS®-TUB



2-geteilte Duschtassen · showers in 2 separate parts · receveur de douche en deux parties · in twee-gedeelde douchebak

LUX ELEMENTS®-TUB



Abflussrohr mit Winkel · sewage pipe with bend · tuyau d'évacuation et coude · vloerafloop met hoek

LUX ELEMENTS®-TUB



LUX ELEMENTS®-TUB-BA...-D...



LUX ELEMENTS®-TUB-BAZ-...

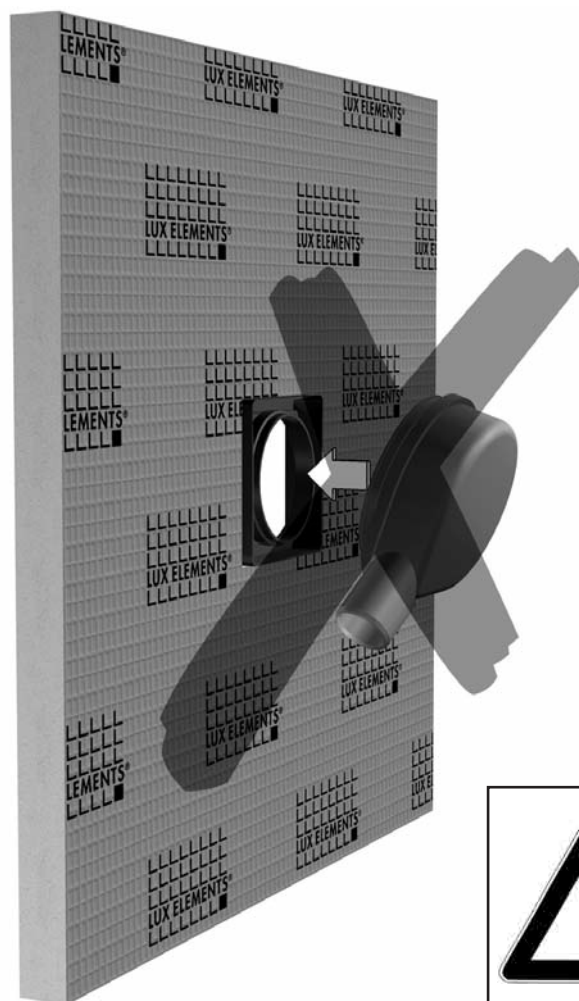


LUX ELEMENTS®-TUB

Geprüfte Qualität · tested quality · qualité garantie · gewaarborgde kwaliteit

- DIN-Geprüft barrierefreie Duschtassenelemente
- Barrier-free shower elements certified according to the German industrial Standard
- Bac à douche contrôlé selon normes DIN „geprüft barrierefrei“
- Naar DIN gecontroleerde douchebakken voor barrierevrij bouwen





D BITTE BEACHTEN

... Ablauftopf vor Montage nicht durch Einrasten an den Duschboden befestigen!

GB PLEASE OBSERVE

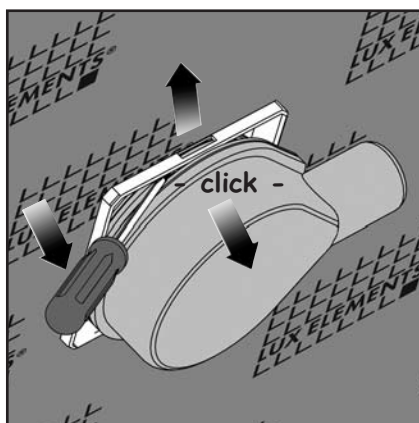
... do not engage the drain pan to the shower base prior to installation!

F VEUILLEZ TENIR COMPTE

... ne pas fixer le siphon de sol au receveur de douche avant le montage!

NL GELIEVE OP

... afvoer niet voor montage vastklikken aan het douchebakelement!

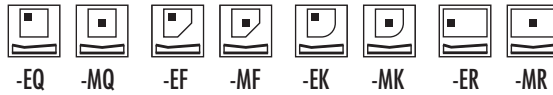


D – Falls notwendig, lässt sich der Ablauftopf mit Hilfe eines Hebels (z.B. Schraubendreher) wieder vom Aufnahmerahmen trennen (siehe Skizze).

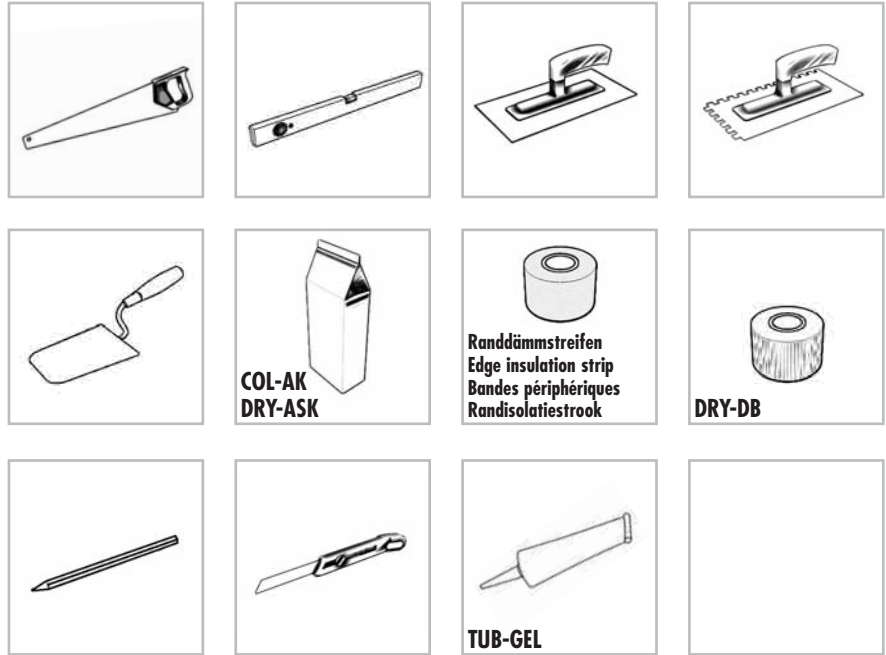
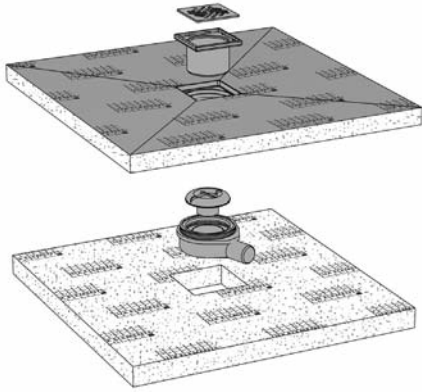
GB – If necessary, the drain pan may be removed from the attachment frame with the aid of a lever (i.e. screwdriver – please see drawing)

F – Si nécessaire, le siphon de sol peut être séparé au moyen d'un levier (p.ex. tournevis), du cadre de réception (voir esquisse).

NL – Indien nodig, is de afvoerpot met behulp van een hefwerktuig (b.v. schroevendraaier) weer scheidbaar van het ingebouwde montageraam (zie schets).



02 | 2009



D Bitte beachten Sie ...

... unsere Datenblätter, die weitere technische Informationen zur Montage und Verlegung von Belagsmaterialien enthalten. Sie können diese kostenlos von unserer Homepage herunterladen. Generell empfehlen wir bei einer Verlegung von Mosaik von < 5 x 5 cm eine Verklebung und Verfugung mit Reaktionsharz.

GB Please observe ...

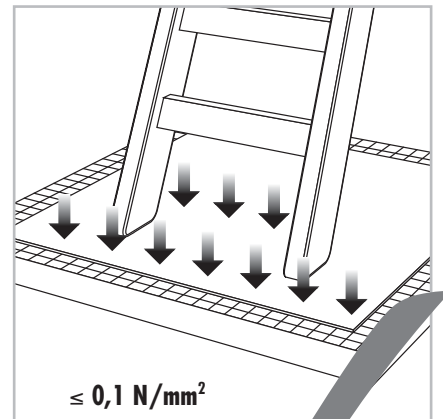
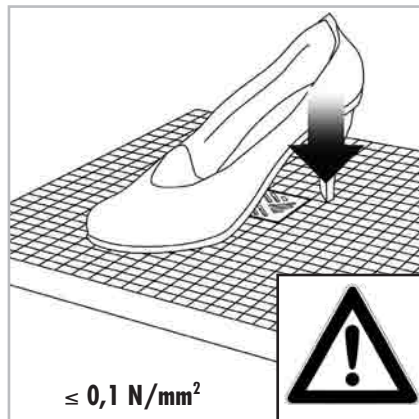
... our data sheets. These contain further technical information regarding the assembly and installation of cladding materials. You may download them free of charge from our homepage. We generally advise for tiles < 5 x 5 cm to use epoxy for gluing and grouting.

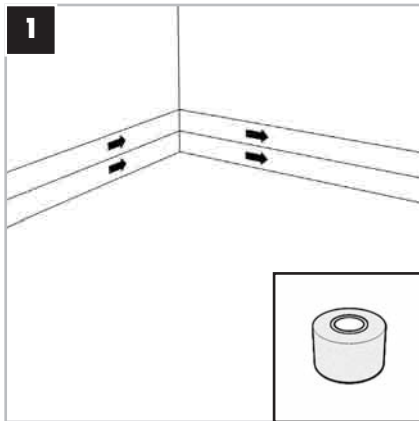
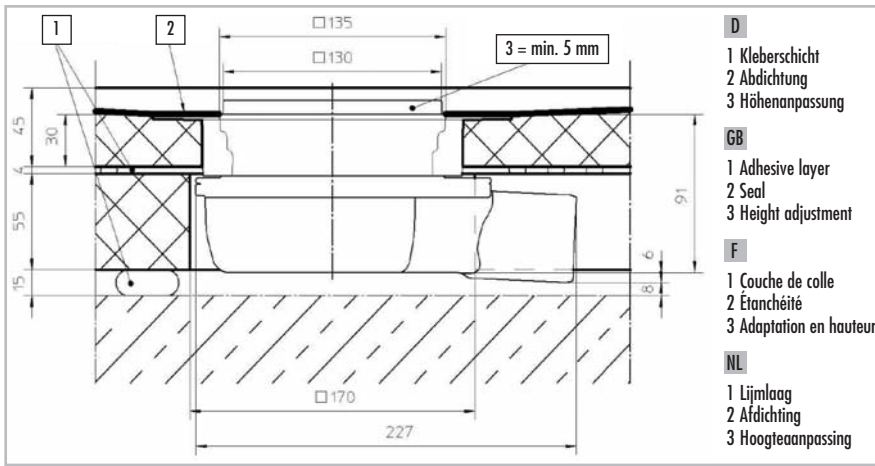
F Veuillez tenir compte ...

... de nos fiches techniques qui contiennent de plus amples informations techniques sur le montage et la pose des matériaux de revêtement. Vous pouvez les télécharger gratuitement sur notre site internet. Pour la mise en oeuvre de mosaïque d'un format < 5 x 5 nous conseillons un collage et un jointoyement à l'époxy.

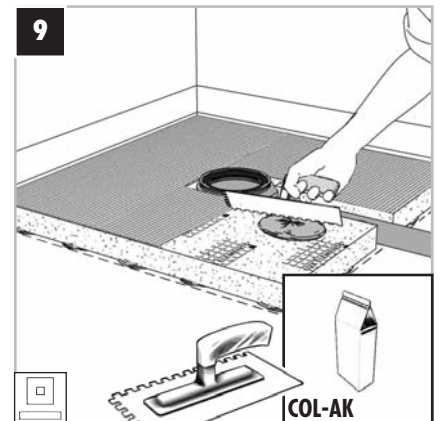
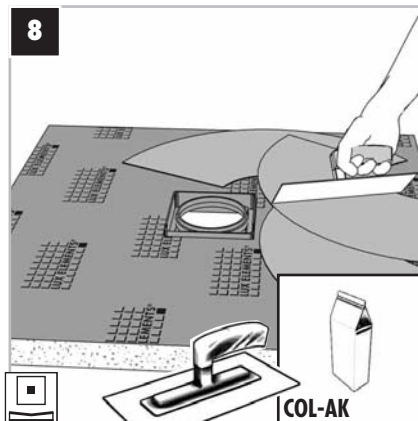
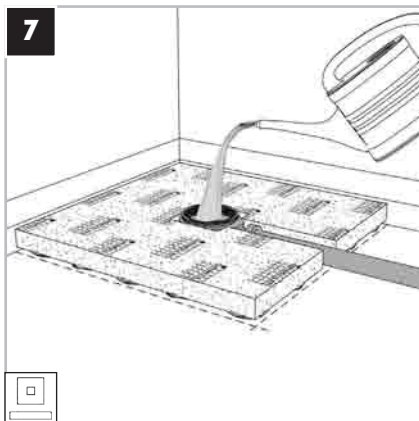
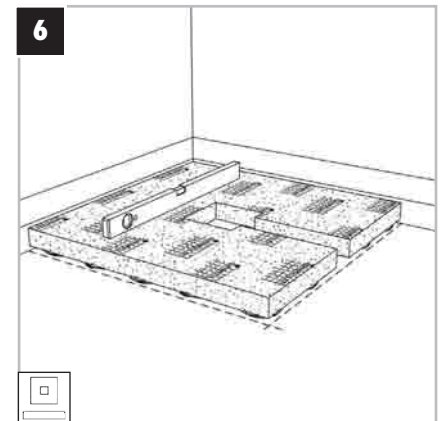
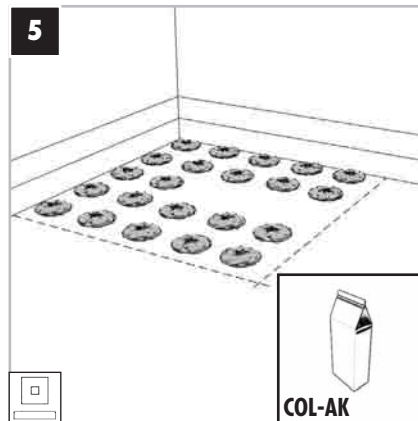
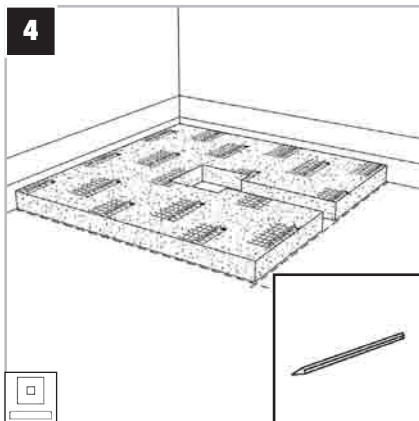
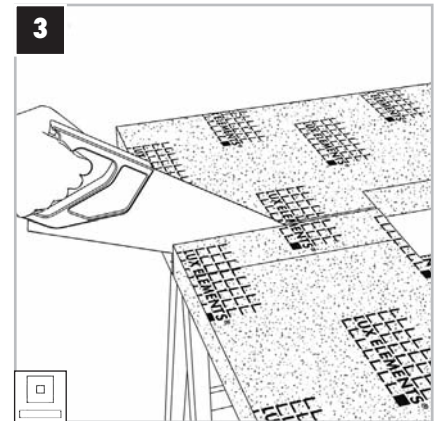
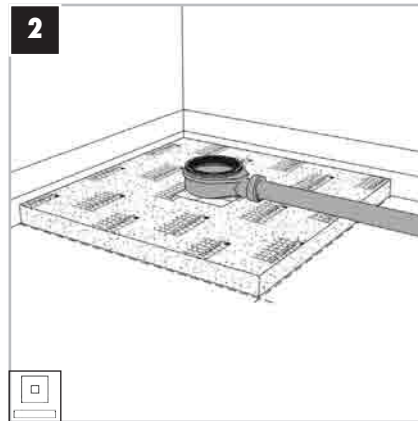
NL Gelieve op ...

... onze gegevensbladen te letten. Deze bevatten verdere technische informatie m.b.t. plaatsing van afdekmaterialen. U kan deze kosteloos van onze internetpagina downloaden. Algemeen adviseren wij bij het kleven en het voegen van mosaik < 5 x 5 cm een epoxylijm te gebruiken.

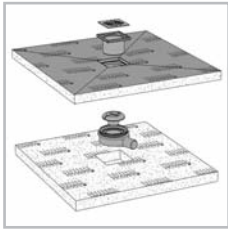




D Randdämmstreifen **GB** Edge insulation strip
F Bandes périphériques **NL** Randisolatiestrook



6 - 8 mm

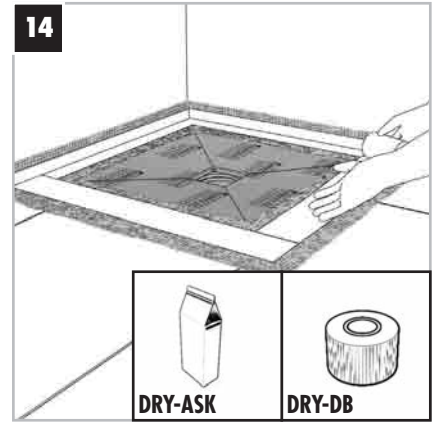
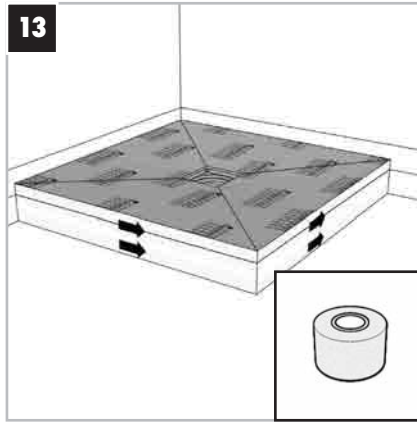
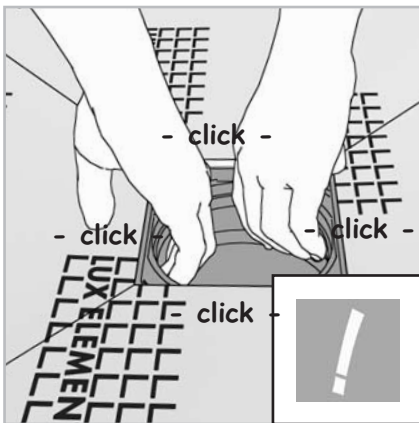
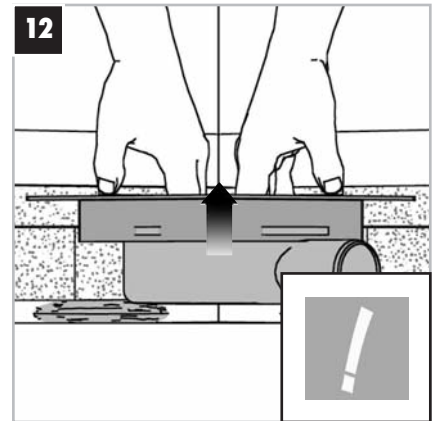
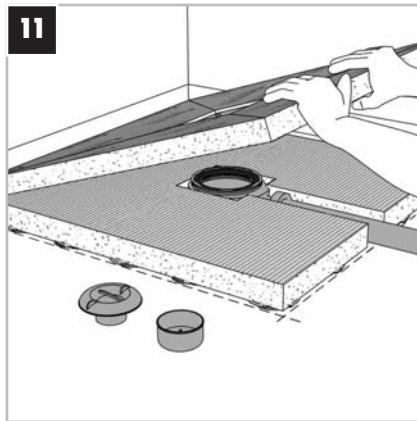
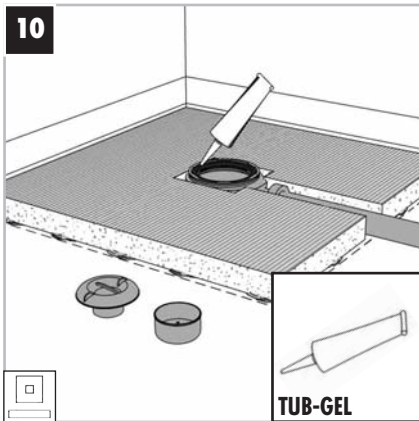


LUX ELEMENTS®-TUB

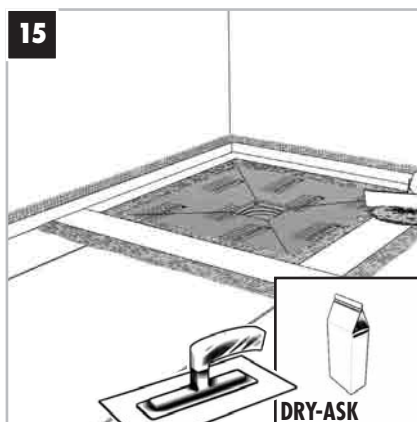
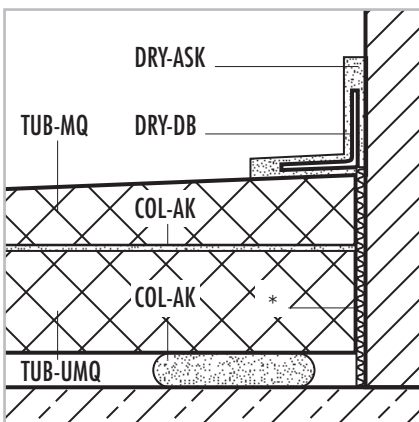


02 | 2009

1.1



D Randdämmstreifen GB Edge insulation strip
F Bandes périphériques NL Randisolatiestrook



* D Randdämmstreifen GB Edge insulation strip
F Bandes périphériques NL Randisolatiestrook

D Bitte beachten Sie ...

... unsere Datenblätter, die weitere technische Informationen zur Montage und Verlegung von Belagsmaterialien enthalten. Sie können diese kostenlos von unserer Homepage herunterladen. Generell empfehlen wir bei einer Verlegung von Mosaik von < 5 x 5 cm eine Verklebung und Verfugung mit Reaktionsharz.

GB Please observe ...

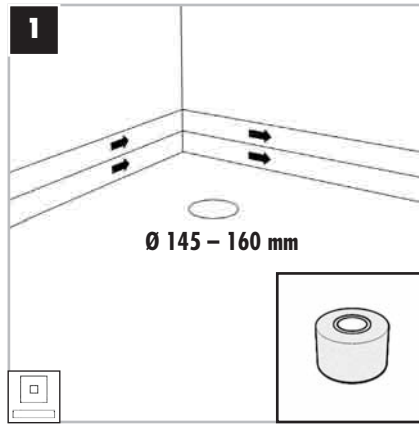
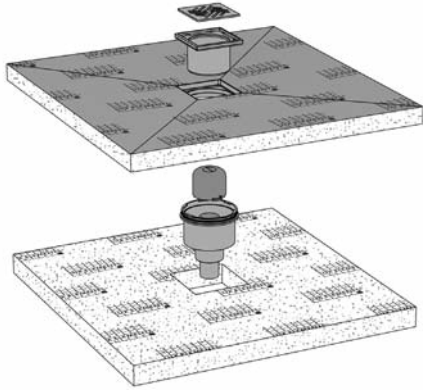
... our data sheets. These contain further technical information regarding the assembly and installation of cladding materials. You may download them free of charge from our homepage. We generally advise for tiles < 5 x 5 cm to use epoxy for gluing and grouting.

F Veuillez tenir compte ...

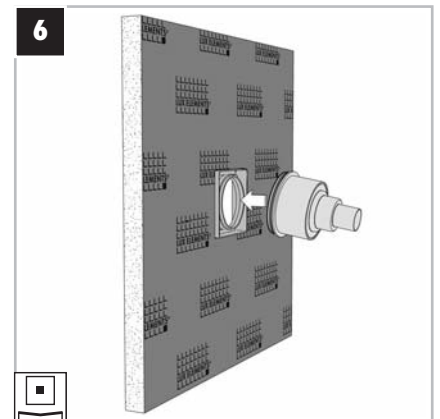
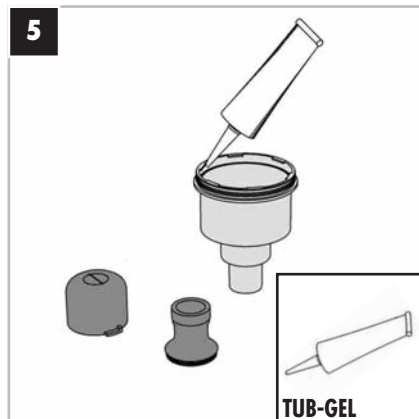
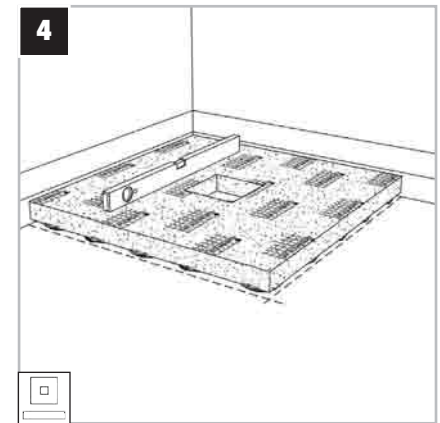
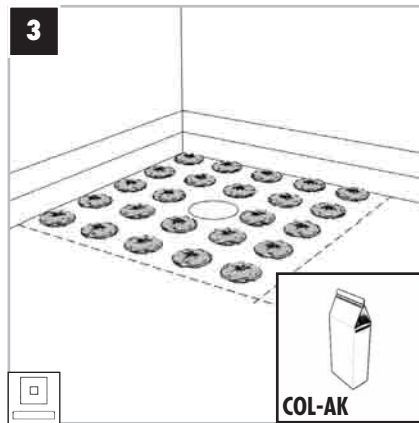
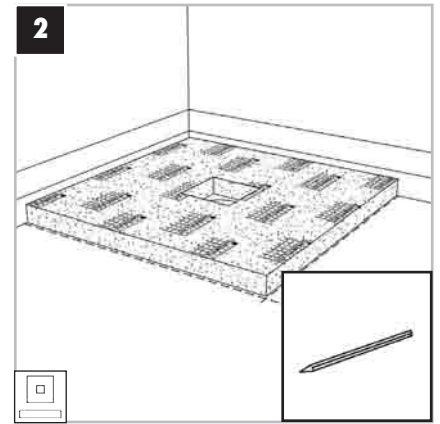
... de nos fiches techniques qui contiennent de plus amples informations techniques sur le montage et la pose des matériaux de revêtement. Vous pouvez les télécharger gratuitement sur notre site internet. Pour la mise en oeuvre de mosaïque d'un format < 5 x 5 cm nous conseillons un collage et un jointoyement à l'époxy.

NL Gelieve op ...

... onze gegevensbladen te letten. Deze bevatten verdere technische informatie m.b.t. plaatsing van afdekmaterialen. U kan deze kosteloos van onze internetpagina downloaden. Algemeen adviseren wij bij het kleven en het voegen van mozaik < 5 x 5 cm een epoxylijm te gebruiken.



D Randdämmstreifen GB Edge insulation strip
 F Bandes périphériques NL Randisolatiestrook

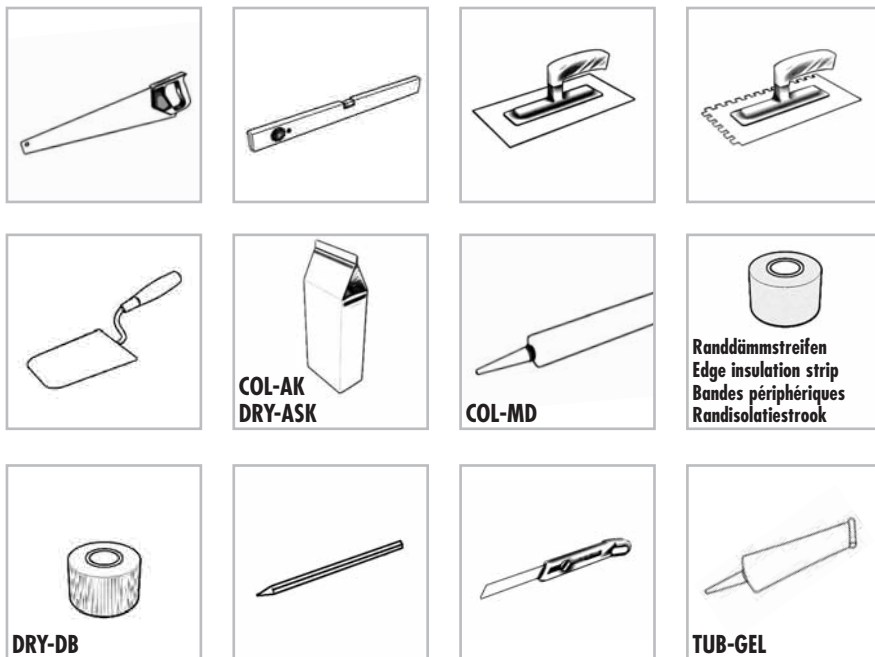
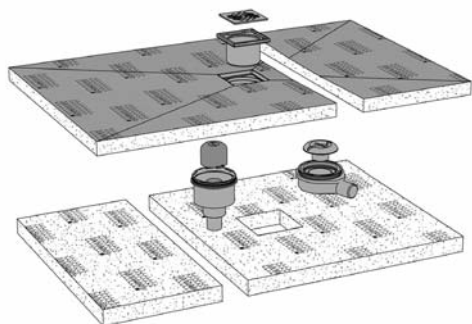


► 5 - 6

7 - 15



02 | 2009



D Bitte beachten Sie ...

... unsere Datenblätter, die weitere technische Informationen zur Montage und Verlegung von Belagsmaterialien enthalten. Sie können diese kostenlos von unserer Homepage herunterladen. Generell empfehlen wir bei einer Verlegung von Mosaik von < 5 x 5 cm eine Verklebung und Verfugung mit Reaktionsharz.

GB Please observe ...

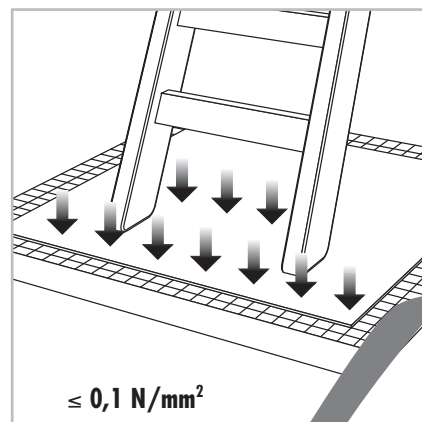
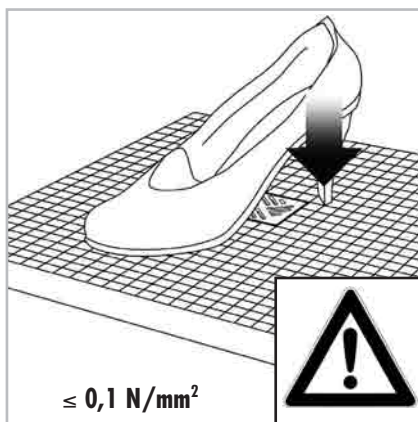
... our data sheets. These contain further technical information regarding the assembly and installation of cladding materials. You may download them free of charge from our homepage. We generally advise for tiles < 5 x 5 cm to use epoxy for gluing and grouting.

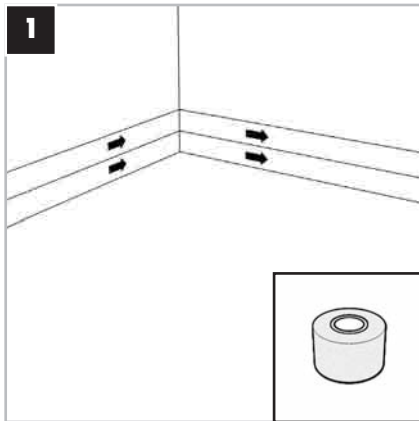
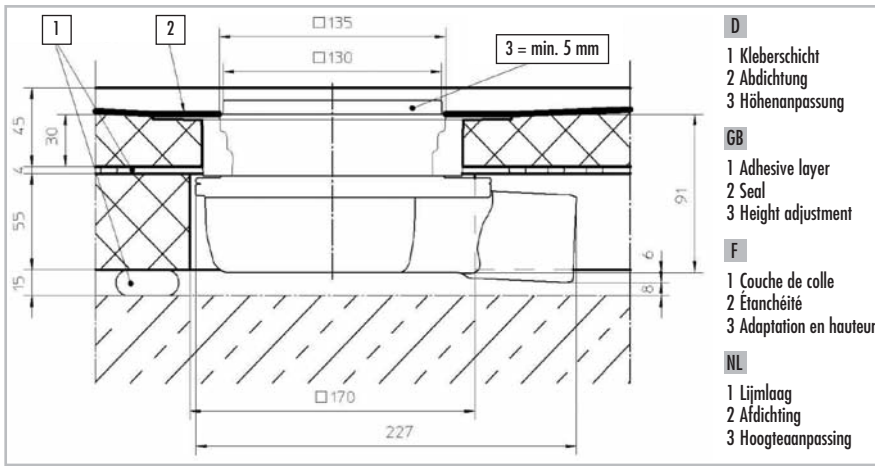
F Veuillez tenir compte ...

... de nos fiches techniques qui contiennent de plus amples informations techniques sur le montage et la pose des matériaux de revêtement. Vous pouvez les télécharger gratuitement sur notre site internet. Pour la mise en oeuvre de mosaïque d'un format < 5 x 5 nous conseillons un collage et un jointoyement à l'époxy.

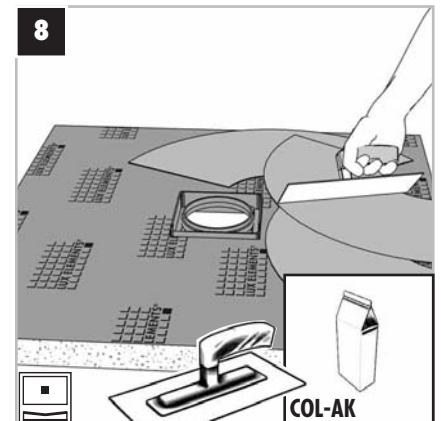
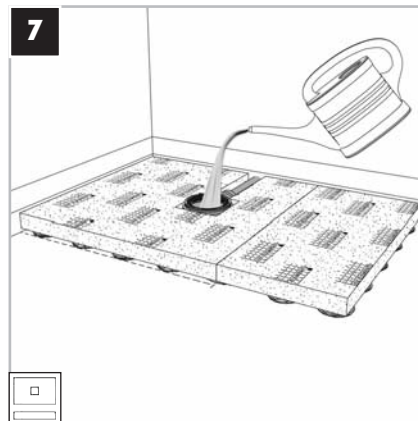
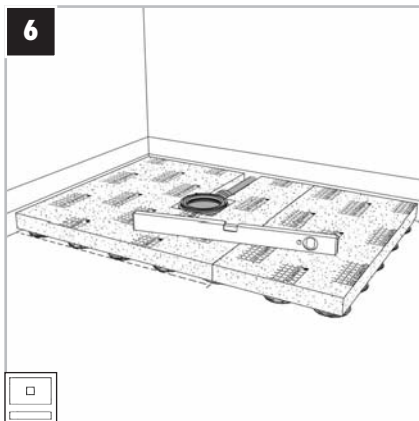
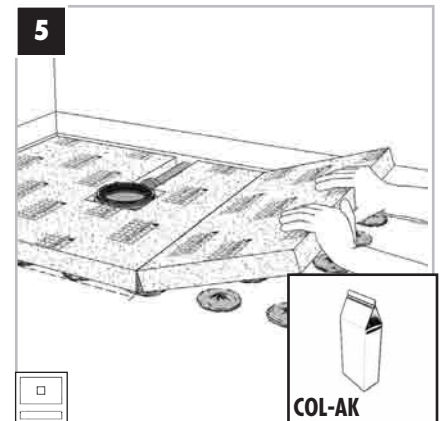
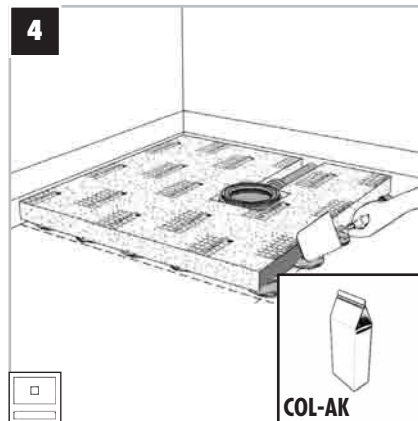
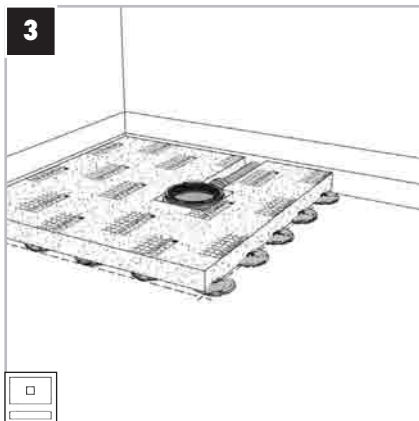
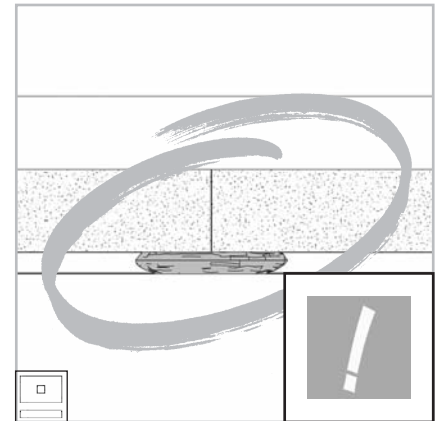
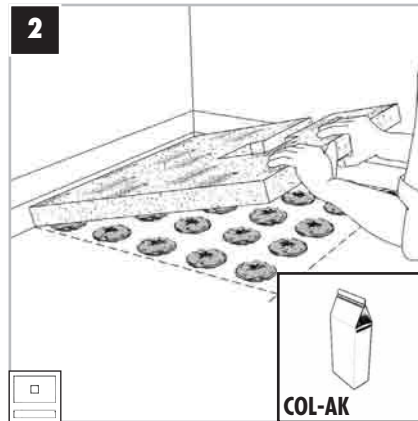
NL Gelieve op ...

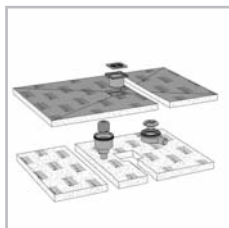
... onze gegevensbladen te letten. Deze bevatten verdere technische informatie m.b.t. plaatsing van afdekmaterialen. U kan deze kosteloos van onze internetpagina downloaden. Algemeen adviseren wij bij het kleven en het voegen van mozaïk < 5 x 5 cm een epoxylijm te gebruiken.





D Randdämmstreifen **GB** Edge insulation strip
F Bandes périphériques **NL** Randisolatiestrook



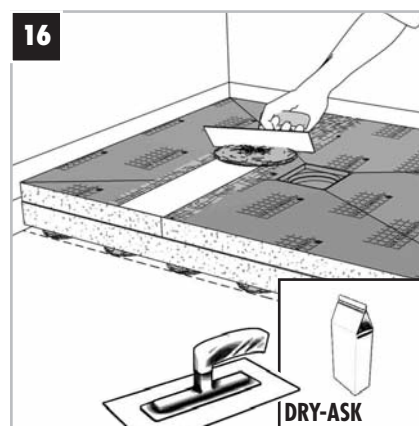
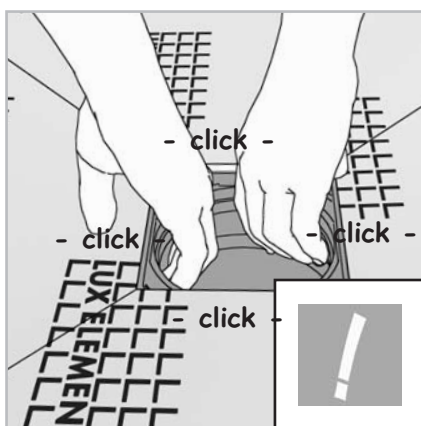
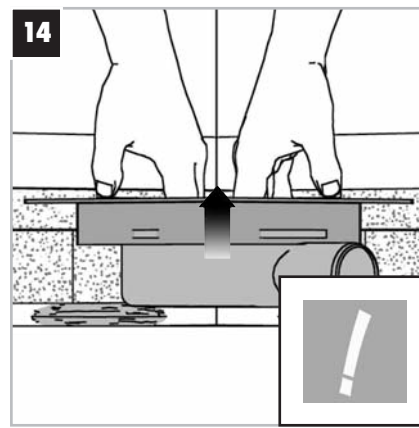
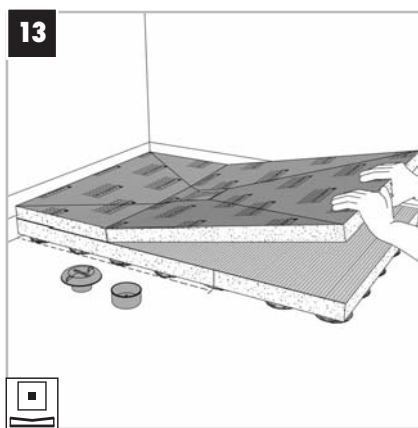
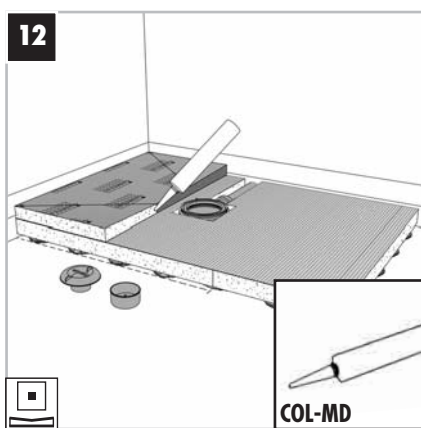
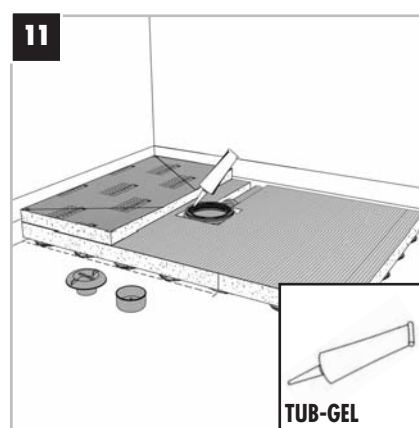
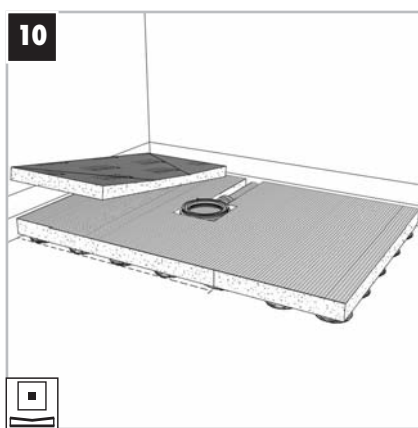
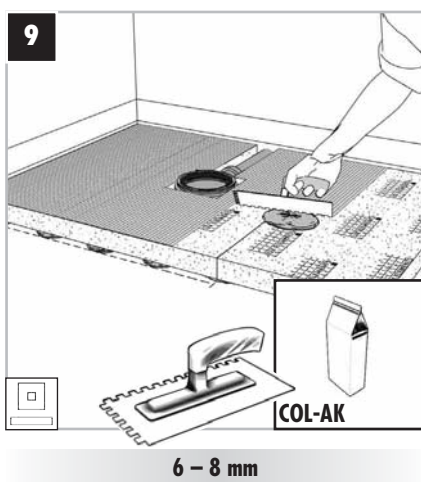


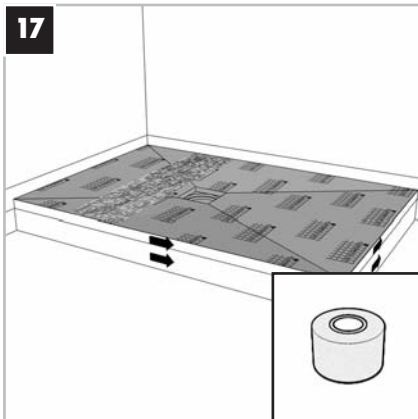
LUX ELEMENTS®-TUB



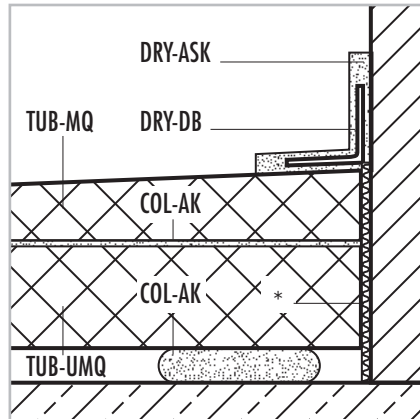
02 | 2009

1.3





D Randdämmstreifen **GB** Edge insulation strip
F Bandes périphériques **NL** Randisolatiestrook



* **D** Randdämmstreifen **GB** Edge insulation strip
F Bandes périphériques **NL** Randisolatiestrook



DRY-ASK **DRY-DB**



► 13

2

D Bitte beachten Sie ...

... unsere Datenblätter, die weitere technische Informationen zur Montage und Verlegung von Belagsmaterialien enthalten. Sie können diese kostenlos von unserer Homepage herunterladen. Generell empfehlen wir bei einer Verlegung von Mosaik von < 5 x 5 cm eine Verklebung und Verfugung mit Reaktionsharz.

GB Please observe ...

... our data sheets. These contain further technical information regarding the assembly and installation of cladding materials. You may download them free of charge from our homepage. We generally advise for tiles < 5 x 5 cm to use epoxy for gluing and grouting.

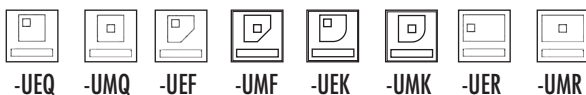
F Veuillez tenir compte ...

... de nos fiches techniques qui contiennent de plus amples informations techniques sur le montage et la pose des matériaux de revêtement. Vous pouvez les télécharger gratuitement sur notre site internet. Pour la mise en oeuvre de mosaïque d'un format < 5 x 5 nous conseillons un collage et un jointoyement à l'époxy.

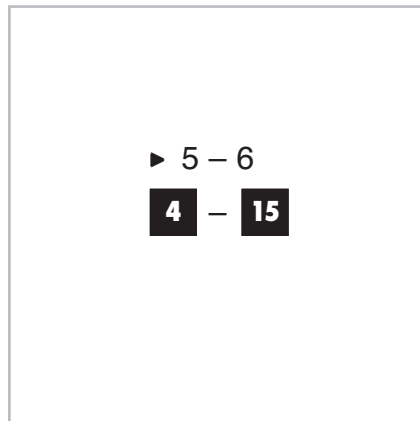
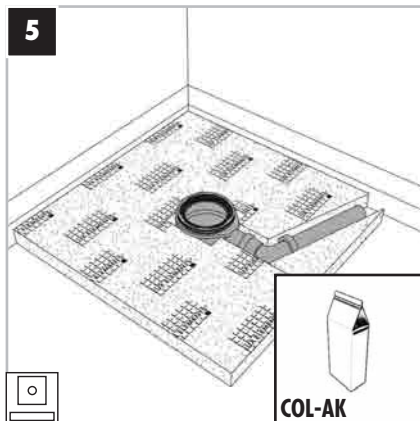
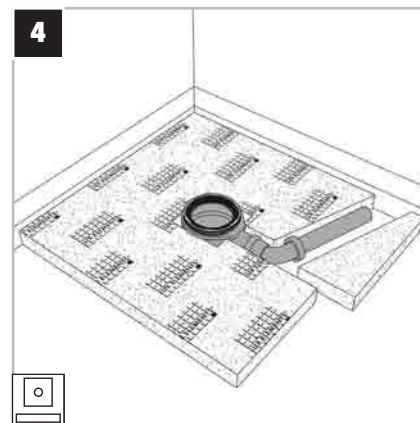
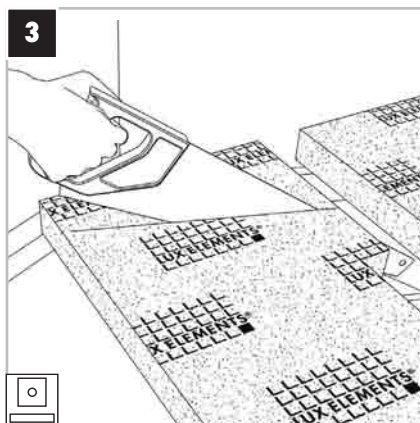
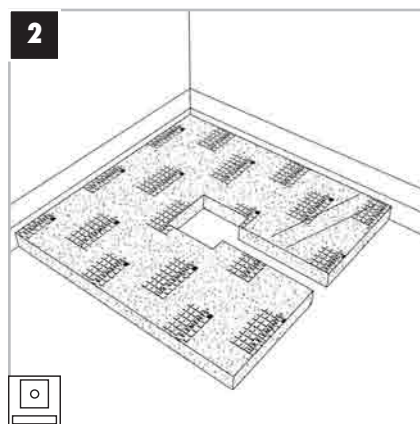
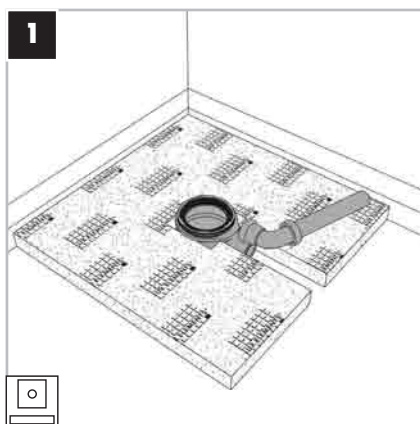
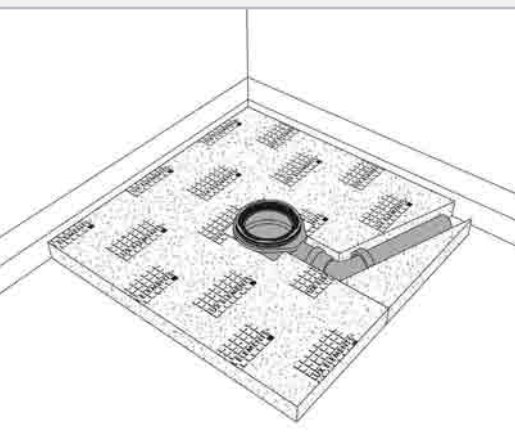
NL Gelieve op ...

... onze gegevensbladen te letten. Deze bevatten verdere technische informatie m.b.t. plaatsing van afdekmaterialen. U kan deze kosteloos van onze internetpagina downloaden. Algemeen adviseren wij bij het kleven en het voegen van mosaik < 5 x 5 cm een epoxylijm te gebruiken.

LUX ELEMENTS®-TUB



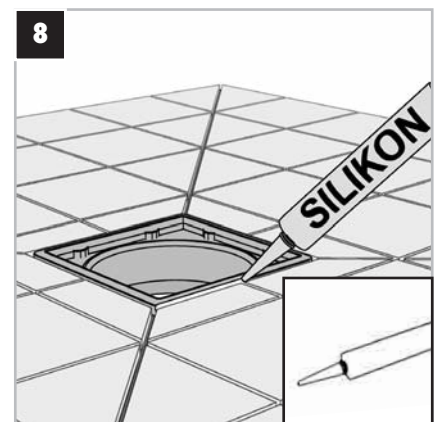
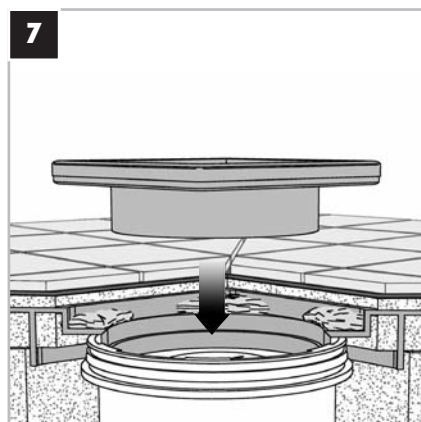
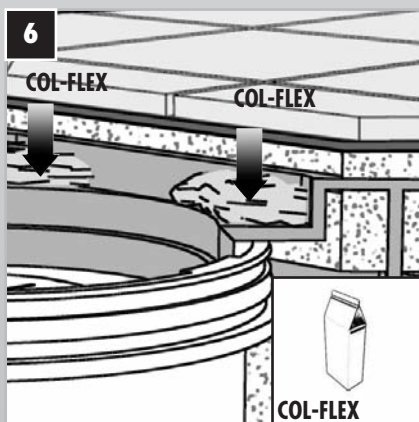
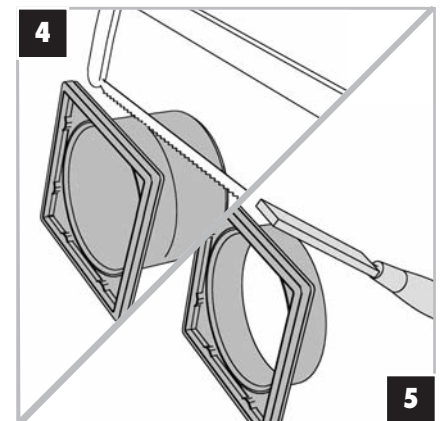
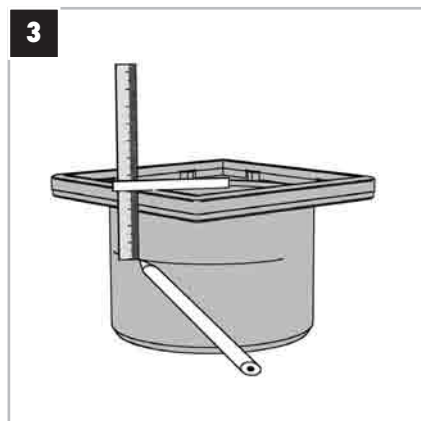
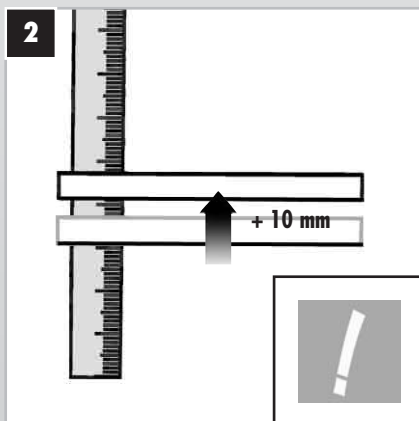
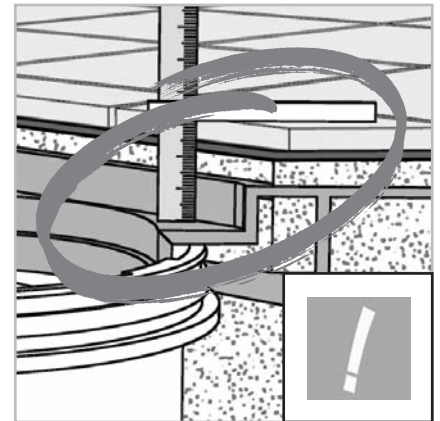
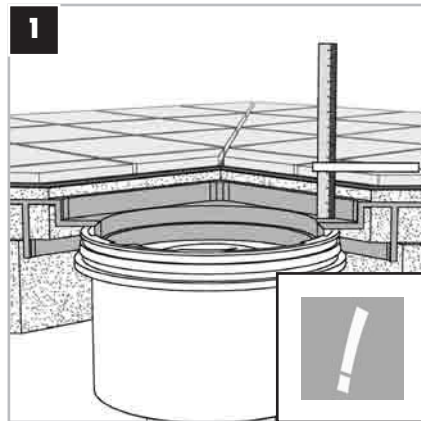
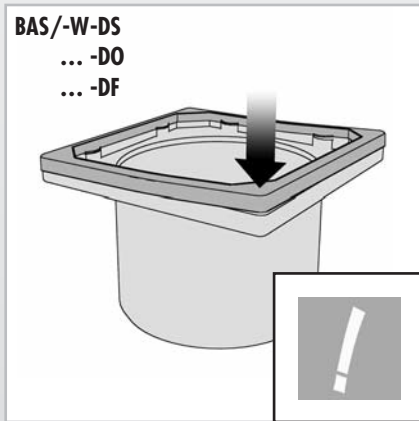
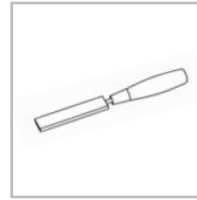
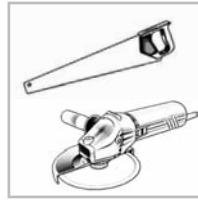
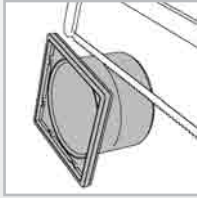
02 | 2009





02 | 2009

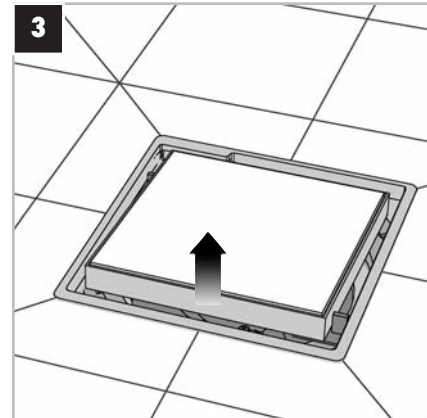
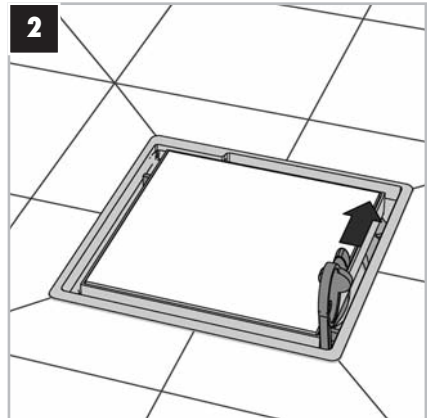
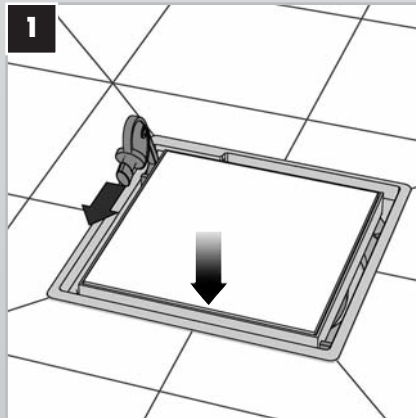
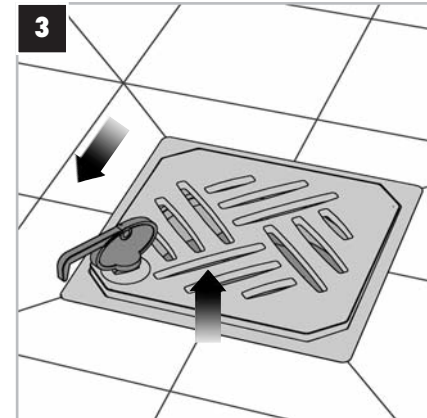
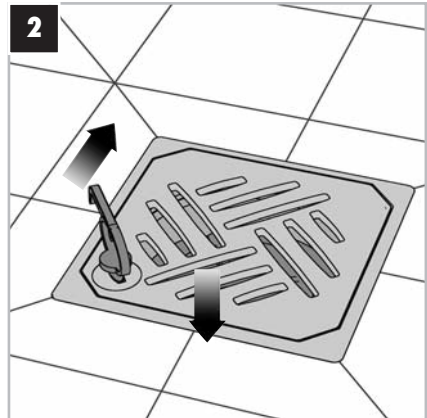
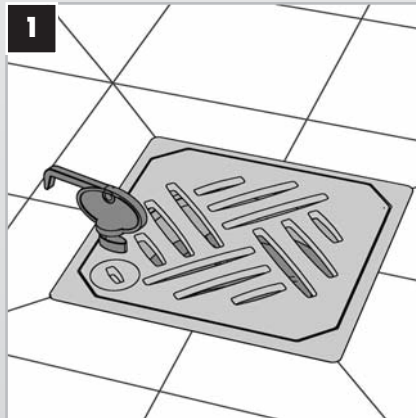
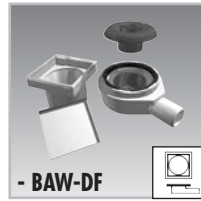
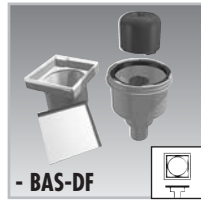
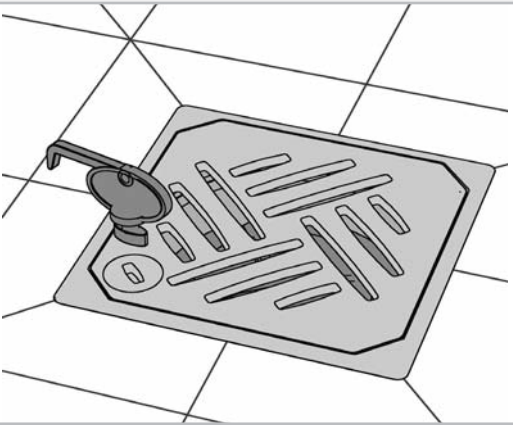
- 1.1 ▶
- 1.2 ▶
- 1.3 ▶



LUX ELEMENTS®-TUB

- 
 -BAS-DS
- 
 -BAS-DO
- 
 -BAS-DF
- 
 -BAW-DS
- 
 -BAW-DO
- 
 -BAW-DF

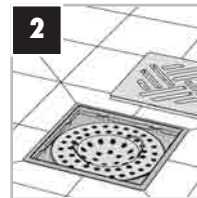
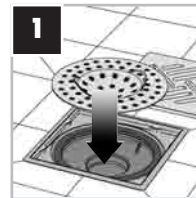
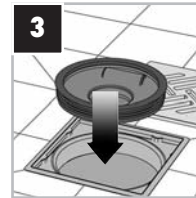
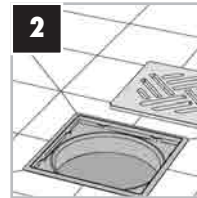
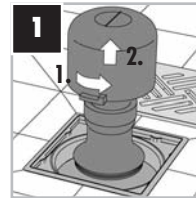
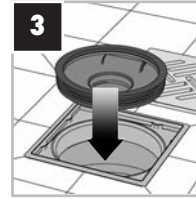
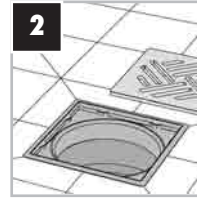
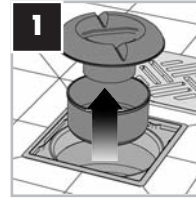
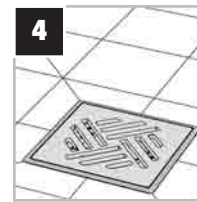
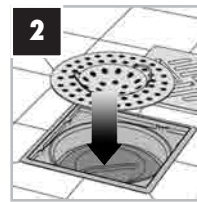
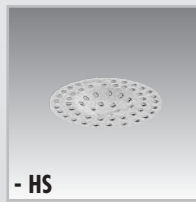
02 | 2009

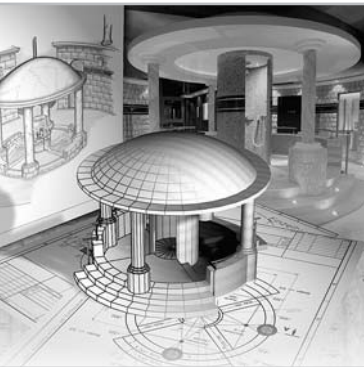


LUX ELEMENTS®-TUB-BAZ-...

- 
-BAS-S
- 
-BAS-DS
- 
-BAS-DO
- 
-BAS-DF
- 
-BAW-S
- 
-BAW-DS
- 
-BAW-DO
- 
-BAW-DF

02 | 2009





LLLLLLLLLL
LLLLLLLLLL
LLLLLLLLLL
LUX ELEMENTS®
LLLLLLLLLL



D

LUX ELEMENTS GmbH & Co. KG
An der Schusterinsel 7
D - 51379 Leverkusen-Opladen

Tel. +49 (0) 21 71/ 72 12 - 0
Fax +49 (0) 21 71/ 72 12 40

E-Mail info@luxelements.de
Web www.luxelements.com

F

LUX ELEMENTS S.A.S.
ZI-31, rue d' Ensisheim
F - 68190 Ungersheim

Tél. +33 (0) 3 89 83 69 79
Fax +33 (0) 3 89 48 83 27

E-Mail info@luxelements.fr
Web www.luxelements.fr

FACHVERBAND
FLIESEN
UND NATURSTEIN
im Zentralverband des Deutschen Baugewerbes

CONNEXION
CARRELAGE

Systèmes
Céramiques

EUF

VSPH
ASCC
ASCP

FECAMC

BYGGKERAMIKKFORENINGEN

02/2009 Technische Änderungen vorbehalten.
We reserve the right to make technical changes.
Sous réserve de modifications techniques.
Onder voorbehoud van technische veranderingen.