

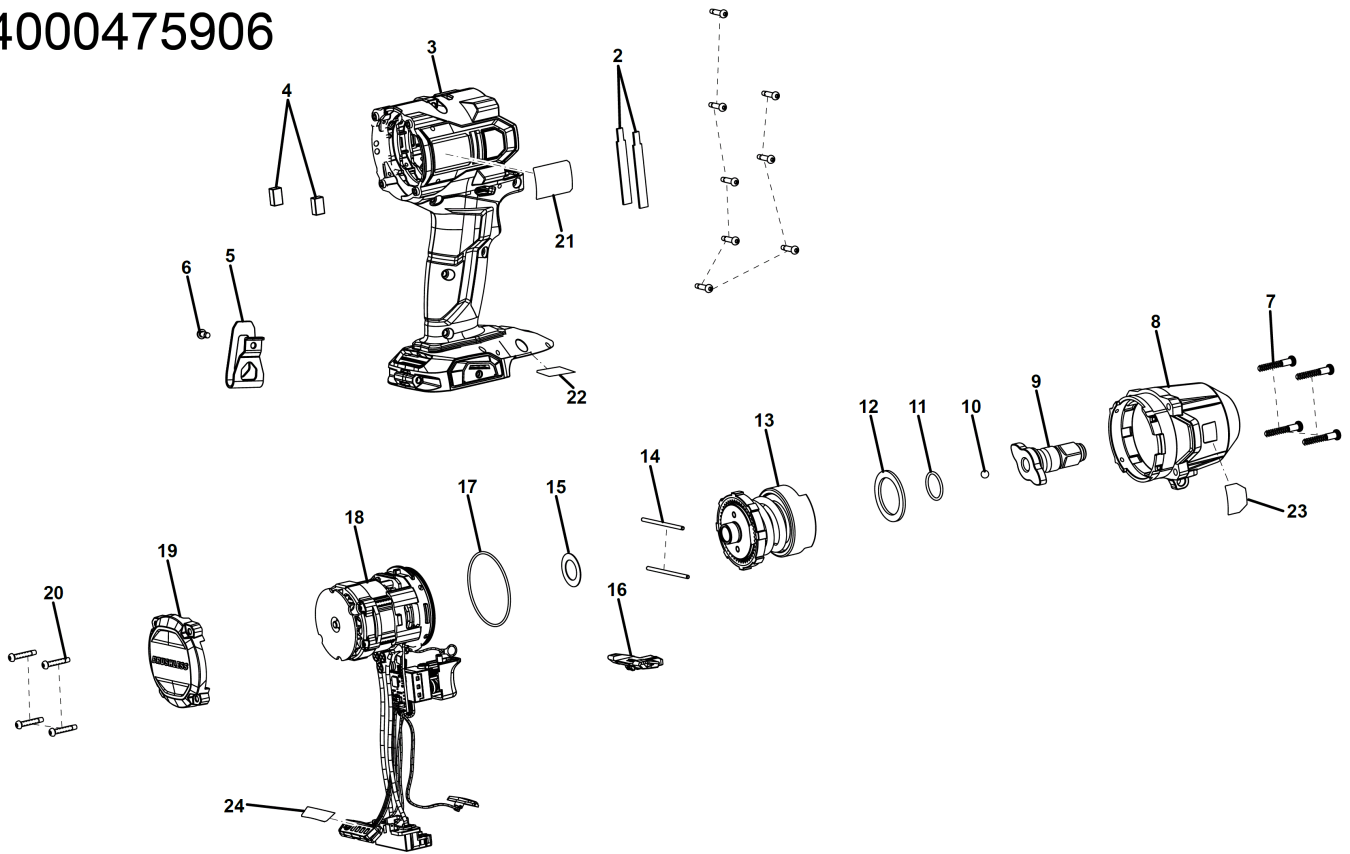
BSS18MTF12BL-402C VIS.DEVI.PERCUT AC XXX

4935479664 - BSS18MTF12-402C - 4000475906



AEG

4000475906



| Position | Quantité | Désignation | Référence | EAN |
|----------|----------|---------------------|------------|---------------|
| 1002 | 2 | BUTOIR E.CAOUTCHOUC | 4931480781 | 4058546427962 |
| 1003 | 1 | CARTER | 4931480782 | 4058546427979 |
| 1004 | 2 | BUTOIR E.CAOUTCHOUC | 4931480783 | 4058546427986 |
| 1005 | 1 | PORTE-EMBOUS | 4931479535 | 4058546388508 |
| 1006 | 1 | VIS | 4931479534 | 4058546388492 |
| 1007 | 4 | VIS | 4931480785 | 4058546428006 |
| 1008 | 1 | CARTER D"ENGRENAGES | 4931480786 | 4058546428013 |
| 1009 | 1 | ARBRE A CAMES | 4931480787 | 4058546428020 |
| 1010 | 1 | BILLE | 4931454841 | 4058546020156 |
| 1011 | 1 | JOINT THORIQUE | 4931480788 | 4058546428037 |
| 1012 | 1 | RONDELLE | 4931480789 | 4058546428044 |
| 1013 | 1 | ROUE | 4931480790 | 4058546428051 |
| 1014 | 2 | GOUPILLE | 4931480791 | 4058546428068 |
| 1015 | 1 | RONDELLE | 4931480792 | 4058546428075 |
| 1016 | 1 | TRINGLE | 4931480793 | 4058546428082 |
| 1017 | 1 | JOINT THORIQUE | 4931480794 | 4058546428099 |
| 1018 | 1 | ELECTRONIQUE | 4931480795 | 4058546428105 |
| 1019 | 1 | END COVER CAP | 4931480796 | 4058546428112 |
| 1020 | 4 | VIS | 4931473496 | 4058546353728 |
| 1021 | 1 | PLAQUE SIGNALETIQUE | 4931480797 | 4058546428129 |
| 1022 | 1 | ETIQUETTE | 4931480798 | 4058546428136 |
| 1023 | 1 | ETIQUETTE | 4931480799 | 4058546428143 |
| 1024 | 1 | ETIQUETTE | 4931480800 | 4058546428150 |