



Einhell

CLASSIC

Scie à chantourner

TC-SS 405 E

Référence produit: 4309040

Numéro d'identification: 21050

Code EAN: 4006825589900

The TC-SS 405 E scroll saw is a useful helper for building models and for other occasional precision cutting jobs. The solid saw base ensure stability and quiet action. Thanks to the tiltable work table, individualization is easy. For really accurate results the blade speed is electronically controlled with high precision. The practical blow-off device of the TC-SS 405 E keeps the workpiece free of chips, making it easier to cut exactly along the marked contour. In addition, a dust extractor adapter can be used to keep the workplace agreeably clean. The saw blades can be changed quickly and safely using the clamping lever, not matter, if coping saw blades or blades with T-shaft.

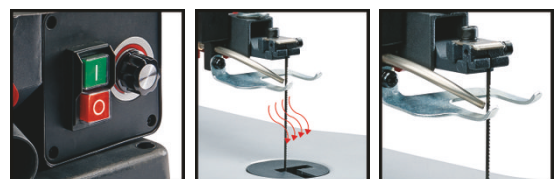
Caractéristiques et bénéfices

- A solid base guarantee a stable placing even during working
- Metal work table adjustable up to 45°
- Quick-release clamp makes it easy to change the saw blade
- the work piece hold-down enables accurate cuts and safety work
- Connection for dust extractor for a tidy workshop
- 1 additional spare saw blade is included in the packaging
- The unit can be affixed directly to the workbench.
- Perfect view to the workpiece due to the blow-off-function
- Works with saw blades with T-shaft and coping saw blades



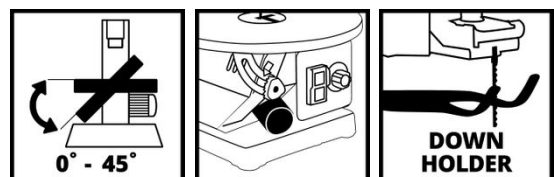
Données techniques

- | | |
|---|------------------------------|
| - Alimentation secteur | 230 V 50 Hz |
| - Puissance max (S2 S2 temps) | 120 W 10 min |
| - Nombre de coups | 400 - 1600 min ⁻¹ |
| - Hauteur de course | 14 mm |
| - Longueur de la lame de scie | 127 mm |
| - Hauteur de coupe maximum à 45 ° | 20 mm |
| - Hauteur de coupe maximum à 90 ° | 52 mm |
| - Gorge | 406 mm |
| - Diamètre de l'adaptateur d'aspiration | 36 mm |
| - Taille de la table de travail | 408 x 250 mm |
| - Table inclinable | 45 ° |



Données logistiques

- | | |
|--|--------------------|
| - Poids du produit | 12.15 kg |
| - Poids brut a l'unité | 14.15 kg |
| - Dimension du packaging unitaire | 656 x 326 x 329 mm |
| - Unité par carton de suremballage | 1 Pieces |
| - Poids brut du carton d'exportation | 14.15 kg |
| - Dimension du carton de sur-emballage | 656 x 326 x 329 mm |
| - Unité par container (20"/40"/40" HC) | 441 882 1008 |



Accessoires disponibles

saw blade kit 127mm, 5pcs.
Scroll Saw Accessory
Référence produit: 4506200
Code EAN: 4006825453928
Einhell Grey